

EvaQMax™ Pen Electro-surgical Evacuation pencil



STERILE EO

Rx ONLY



Do not re-use



Read instructions for use



Product description:

Hand control handpiece with blade electrode, Cable, Hose and holster. Allows the use of Monopolar Cut, Coagulation. Single-use, sterile.

Indications for Use:

EvaQMax™ Pen is designed for general electro-surgical applications and for removing smoke generated by electro-surgery when used in conjunction with an effective smoke evacuation system.

Peak voltage rating: 5 kV (10 kV, peak-to-peak).

| Model | Description |
|----------------------|---|
| SPST / SPST-5 | Telescopic, 2.5" Non-Stick Ceramic Coated Blade, Holster (SPST:10'Cable, SPST-5: 16'Cable) |
| SPST1 / SPST1-5 | Telescopic, 2.5" Insulated Non-Stick Ceramic Coated Blade, Holster (SPST1:10'Cable, SPST1-5: 16'Cable) |
| SPST-SL / SPST-SL5 | Telescopic, 2.5" Non-Stick Ceramic Coated Blade, Holster (SPST-SL:10'Cable, SPST-SL5: 16'Cable) |
| SPST1-SL / SPST1-SL5 | Telescopic, 2.5" Insulated Non-Stick Ceramic Coated Blade, Holster (SPST1-SL:10'Cable, SPST1-SL5: 16'Cable) |

EvaQMax™ Pen is designed to work with electro-surgical generators that use a 3-pin monopolar connection port and smoke evacuation units with a hose connector that is 8–22 mm in diameter.

Before you use:

- Check that the product is not cracked, broken or distorted.
- Make sure the electrode blade is completely connected to the blade socket.

Instruction for use

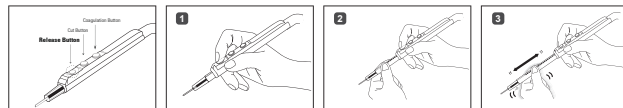
Follow the generator manufacturer's instructions when connecting the device to a monopolar electro-surgical unit. A dispersive electrode should be used with the device generator to prevent burns/injury to the patient when using the monopolar handpiece. Consult the generator manual for additional instructions.

- Make sure the electro-surgical unit is turned off.
- After removing the packing cover of the product, you should link the connector part of the lead wire to the electro-surgical unit.
- Use the hose to connect the device to the smoke evacuator of the electro-surgical unit.
- Turn on the electro-surgical unit. The smoke evacuation pencil is now ready for use (be careful that the top part of the electrode does not come into contact with the patient).
- After pushing the cutting or coagulation push button (or rocker switch), make an incision or coagulate skin tissue of the patient.
- Use the suction function to remove smoke generated during the surgical procedure.
- After using the electro-surgical unit, you should turn the electro-surgical unit's power off, and then separate the device's connector from the electro-surgical unit.
- EvaQMax™ Pen is a single-use product; do not re-use. It should be disposed of immediately after use.
- The disposal method should follow the regulations in force in your country.

Safety Tips

- Use the lowest possible power setting on the associated electro-surgical unit in order to achieve the desired surgical effect. Activation time should be as short as possible.
- Never allow the cables connected to these devices to come into contact with the patient or operator's skin during electro-surgical activations.
- Do not allow the cables connected to these devices to be parallel and in close proximity with the cables of other electrical devices.
- Always place unused associated electro-surgical accessories in a safe, insulated location such as a holster when not in use.
- Inspect and test each device before use.
- Wear a high filtration mask to avoid inhaling harmful plumes during surgical procedures. Surgical smoke contains extremely small particulate matter and may contain viable cells.

※ How to use Telescopic function



- 1 Press the release button first.
- 2 In order to adjust length of suction tube, press the "release" button and pull/push back on the suction tube.
- 3 Please make sure the suction tube is locked in place prior to usage. An audible "click" will confirm that the suction tube is locked in place.

Caution

- These devices should be inspected before each use. Visually examine the devices for obvious physical damage, this includes:
 - *Checking for broken or significantly bent connector contacts.
 - *Checking for any damage, including cuts, punctures, nicks, abrasions, unusual lumps, significant discoloration or otherwise distorted plastic parts.
- *Verifying that the electrode is fully and securely sealed in the pencil before use.
- EvaQMax™ Pen is designed and intended for use only with electro-surgical generators that have been tested to the IEC 60601 standard. For further information please refer to the user manual of the electro-surgical unit.
- EvaQMax™ Pen is not a device for fluid removal; it should not therefore be used for this purpose.
- If the original electrode is removed from the pencil, visually confirm that the new electrode is fully inserted and secured before activating the pencil.
- For procedures where visualisation may be impaired, remain alert to these potential hazards:
 - *The electrode tip may remain hot enough to cause burns after the current has been deactivated.
 - *Inadvertent activation or movement of the activated electrode outside of the field of vision may result in injury to the patient.
 - *Localised burns to the patient or physician may result from electrical currents carried through conductive objects. Current may be generated in conductive objects through direct contact with the active electrode, or by
- "Do not forcibly move the suction tube as this may cause the locking mechanism to become damaged."***

Warning

- Do not re-sterilise.
- This single-use product is not designed or approved for re-use. Re-use may cause cross-contamination, or cause a malfunction as a result of the product being physically damaged.
- These devices should never be used in the presence of flammable gases, flammable prep solutions or drapes, oxidising gases such as nitrous oxide (N₂O), or in oxygen-enriched environments.
- To prevent shock, the pencil should be placed on the region of interest before activation.
- Please make sure the suction tube is locked in place prior to use.***

Federal (USA) law restricts this device to use by or on the order of a physician.

* Sterility guaranteed unless package has been opened, broken or damaged.

Manufactured for

MEDIMAXTECH USA Inc.

2805 East Ana Street East Rancho Dominguez, CA 90221

Tel : 1-855-MEDIMAX (1-855-633-4629)

Date: 2020-12-16 Rev.006 Made in Korea.

MMT
MEDIMAXTECH

EvaQMax™ Pen ElectroSurgical Evacuation pencil



STERILE EO

Rx ONLY



Read instructions for use



Product description:

Hand control handpiece with blade electrode, Cable, Hose and holster. Allows the use of Monopolar Cut, Coagulation. Single-use; sterile.

Indications for Use:

EvaQMax™ Pen is designed for general electroSurgical applications and for removing smoke generated by electroSurgery when used in conjunction with an effective smoke evacuation system.

Peak voltage rating: 5 kV (10 kV, peak-to-peak).

| Model | Description |
|----------------------|---|
| SPST / SPST-5 | Telescopic, 2.5" Non-Stick Ceramic Coated Blade, Holster (SPST:10' Cable, SPST-5: 16' Cable) |
| SPSTI / SPSTI-5 | Telescopic, 2.5" Insulated Non-Stick Ceramic Coated Blade, Holster (SPSTI:10' Cable, SPSTI-5: 16' Cable) |
| SPST-SL / SPST-SL5 | Telescopic, 2.5" Non-Stick Ceramic Coated Blade, Holster (SPST-SL:10' Cable, SPST-SL5: 16' Cable) |
| SPSTI-SL / SPSTI-SL5 | Telescopic, 2.5" Insulated Non-Stick Ceramic Coated Blade, Holster (SPSTI-SL:10' Cable, SPSTI-SL5: 16' Cable) |

EvaQMax™ Pen is designed to work with electroSurgical generators that use a 3-pin monopolar connection port and smoke evacuation units with a hose connector that is 8–22 mm in diameter.

Before you use:

- Check that the product is not cracked, broken or distorted.
- Make sure the electrode blade is completely connected to the blade socket.

Instruction for use

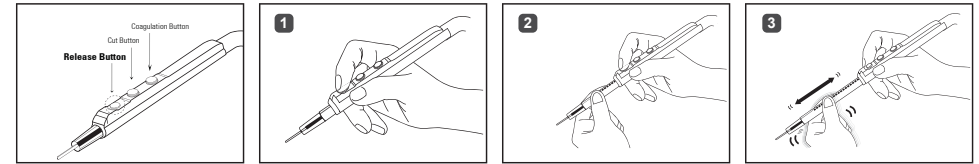
Follow the generator manufacturer's instructions when connecting the device to a monopolar electroSurgical unit. A dispersive electrode should be used with the device generator to prevent burns/injury to the patient when using the monopolar handpiece. Consult the generator manual for additional instructions.

- Make sure the electroSurgical unit is turned off.
- After removing the packing cover of the product, you should link the connector part of the lead wire to the electroSurgical unit.
- Use the hose to connect the device to the smoke evacuator of the electroSurgical unit.
- Turn on the electroSurgical unit. The smoke evacuation pencil is now ready for use (be careful that the top part of the electrode does not come into contact with the patient).
- After pushing the cutting or coagulation push button (or rocker switch), make an incision or coagulate skin tissue of the patient.
- Use the suction function to remove smoke generated during the surgical procedure.
- After using the electroSurgical unit, you should turn the electroSurgical unit's power off, and then separate the device's connector from the electroSurgical unit.
- EvaQMax™ Pen is a single-use product; do not re-use. It should be disposed of immediately after use.
- The disposal method should follow the regulations in force in your country.

Safety Tips

- Use the lowest possible power setting on the associated electroSurgical unit in order to achieve the desired surgical effect. Activation time should be as short as possible.
- Never allow the cables connected to these devices to come into contact with the patient or operator's skin during electroSurgical activations.
- Do not allow the cables connected to these devices to be parallel and in close proximity with the cables of other electrical devices.
- Always place unused associated electroSurgical accessories in a safe, insulated location such as a holster when not in use.
- Inspect and test each device before use.
- Wear a high filtration mask to avoid inhaling harmful plumes during surgical procedures. Surgical smoke contains extremely small particulate matter and may contain viable cells.

※ How to use Telescopic function



- 1 Press the release button first.
- 2 In order to adjust length of suction tube, press the "release" button and pull/push back on the suction tube.
- 3 Please make sure the suction tube is locked in place prior to usage. An audible "click" will confirm that the suction tube is locked in place.

Caution

- These devices should be inspected before each use. Visually examine the devices for obvious physical damage, this includes:
 - *Checking for broken or significantly bent connector contacts.
 - *Checking for any damage, including cuts, punctures, nicks, abrasions, unusual lumps, significant discoloration or otherwise distorted plastic parts.
 - *Verifying that the electrode is fully and securely sealed in the pencil before use.
- EvaQMax™ Pen is designed and intended for use only with electroSurgical generators that have been tested to the IEC 60601 standard. For further information please refer to the user manual of the electroSurgical unit.
- EvaQMax™ Pen is not a device for fluid removal; it should not therefore be used for this purpose.
- If the original electrode is removed from the pencil, visually confirm that the new electrode is fully inserted and secured before activating the pencil.
- For procedures where visualisation may be impaired, remain alert to these potential hazards:
 - *The electrode tip may remain hot enough to cause burns after the current has been deactivated.
 - *Inadvertent activation or movement of the activated electrode outside of the field of vision may result in injury to the patient.
 - *Localised burns to the patient or physician may result from electrical currents carried through conductive objects. Current may be generated in conductive objects through direct contact with the active electrode, or by
- ***Do not forcibly move the suction tube as this may cause the locking mechanism to become damaged.**

Warning

- Do not re-sterilise.
- This single-use product is not designed or approved for re-use. Re-use may cause cross-contamination, or cause a malfunction as a result of the product being physically damaged.
- These devices should never be used in the presence of flammable gases, flammable prep solutions or drapes, oxidising gases such as nitrous oxide (N₂O), or in oxygen-enriched environments.
- To prevent shock, the pencil should be placed on the region of interest before activation.
- ***Please make sure the suction tube is locked in place prior to use.**

Federal (USA) law restricts this device to use by or on the order of a physician.

* Sterility guaranteed unless package has been opened, broken or damaged.

Manufactured for

MEDIMAXTECH USA Inc.

2805 East Ana Street East Rancho Dominguez, CA 90221

Tel : 1-855-MEDIMAX (1-855-633-4629)

Date: 2020-12-16 Rev.006 Made in Korea.

MMT
MEDIMAXTECH